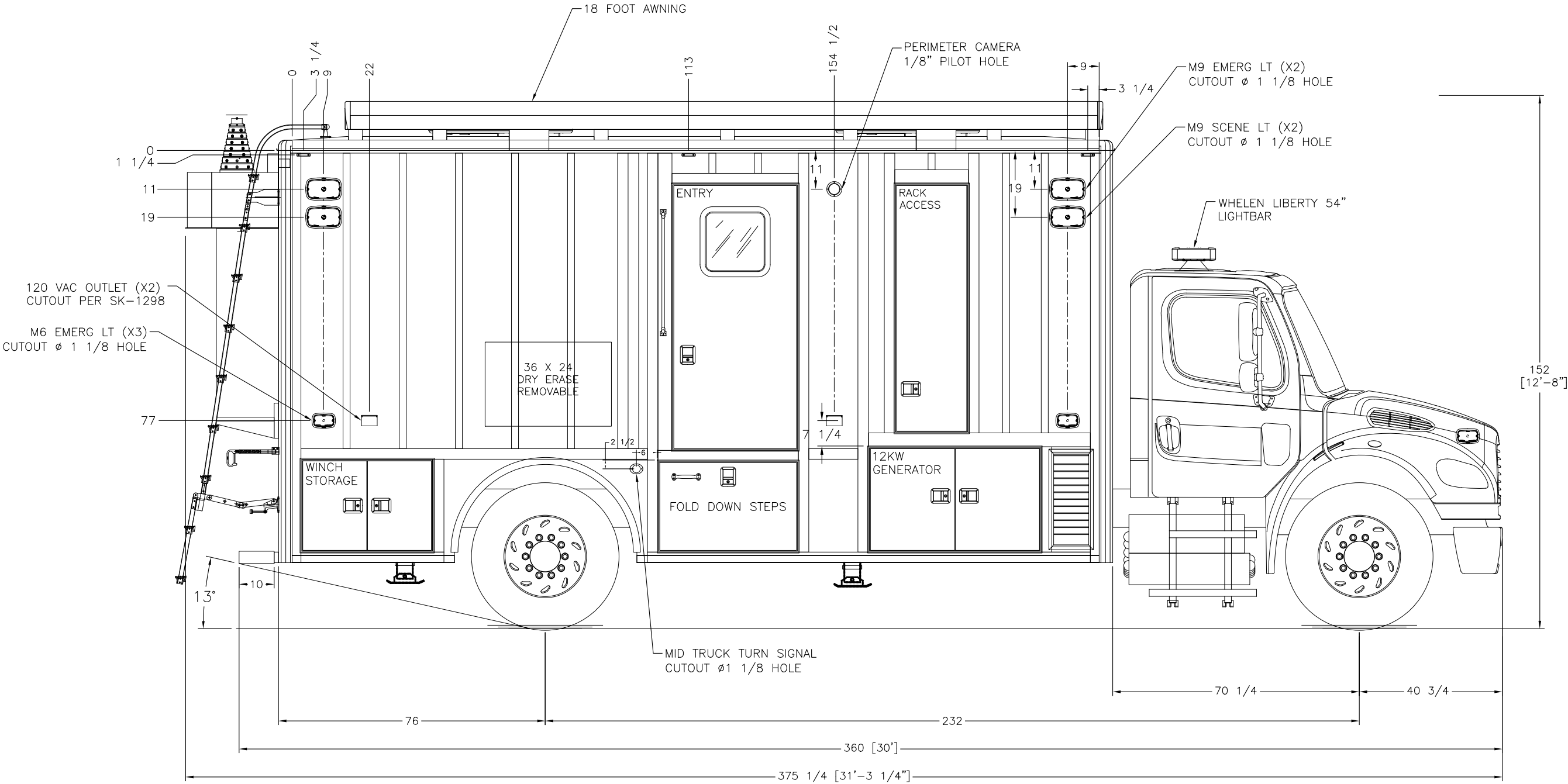


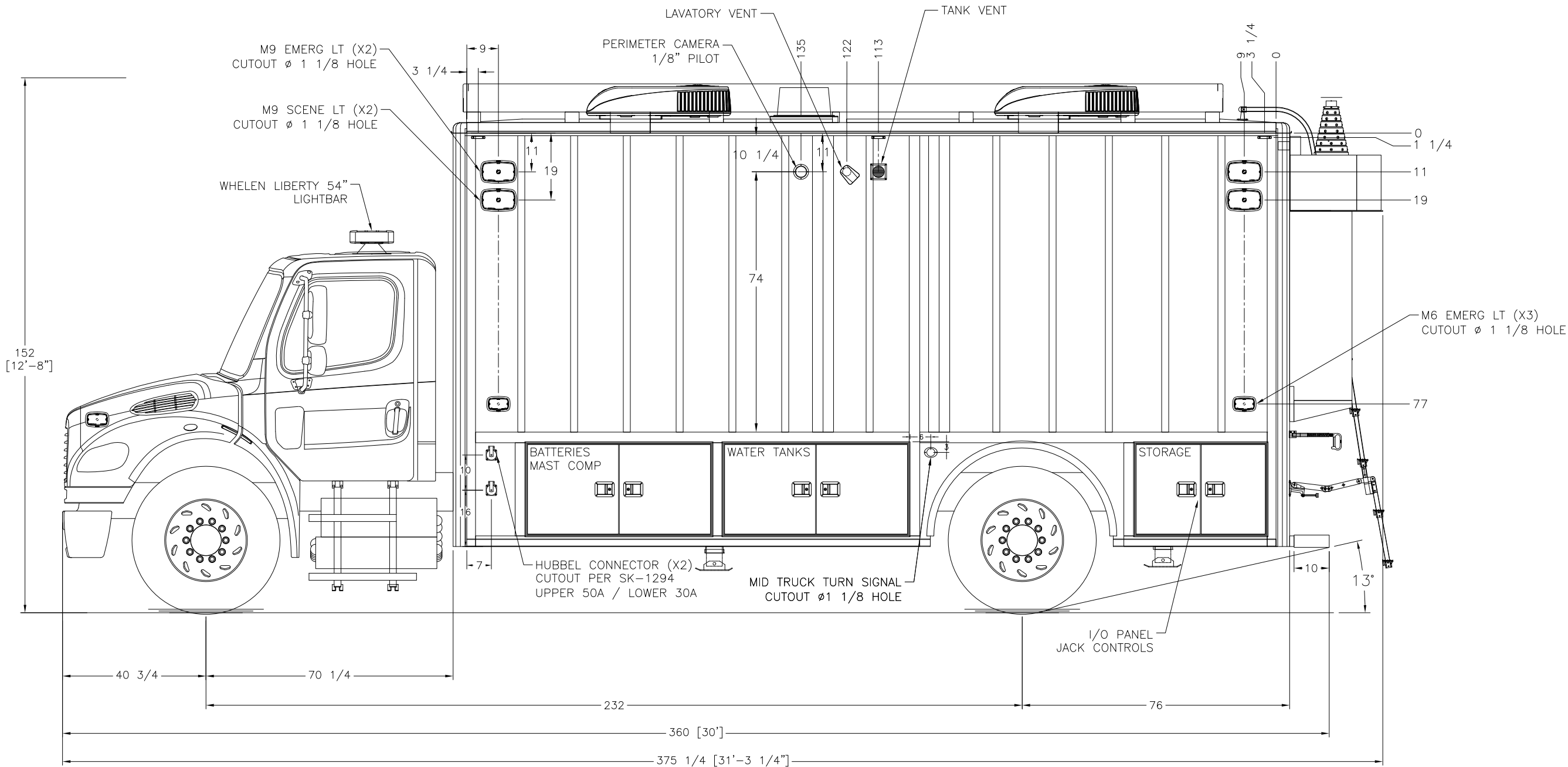
REVISIONS					
CHK DATE	CHK BY	DESCRIPTION	DATE	BY	REV
01/18/23	JAA	INITIAL RELEASE	01/18/23	JRP	00



THIS DRAWING IS THE PROPERTY OF FRONTLINE COMMUNICATIONS CORPORATION. IT IS CONFIDENTIAL AND ALL RIGHTS ARE RESERVED. IT SHALL NOT BE REPRODUCED, COPIED, LENT, NOR USED FOR ANY PURPOSE OTHER THAN THAT FOR WHICH IT IS SPECIFICALLY FURNISHED.

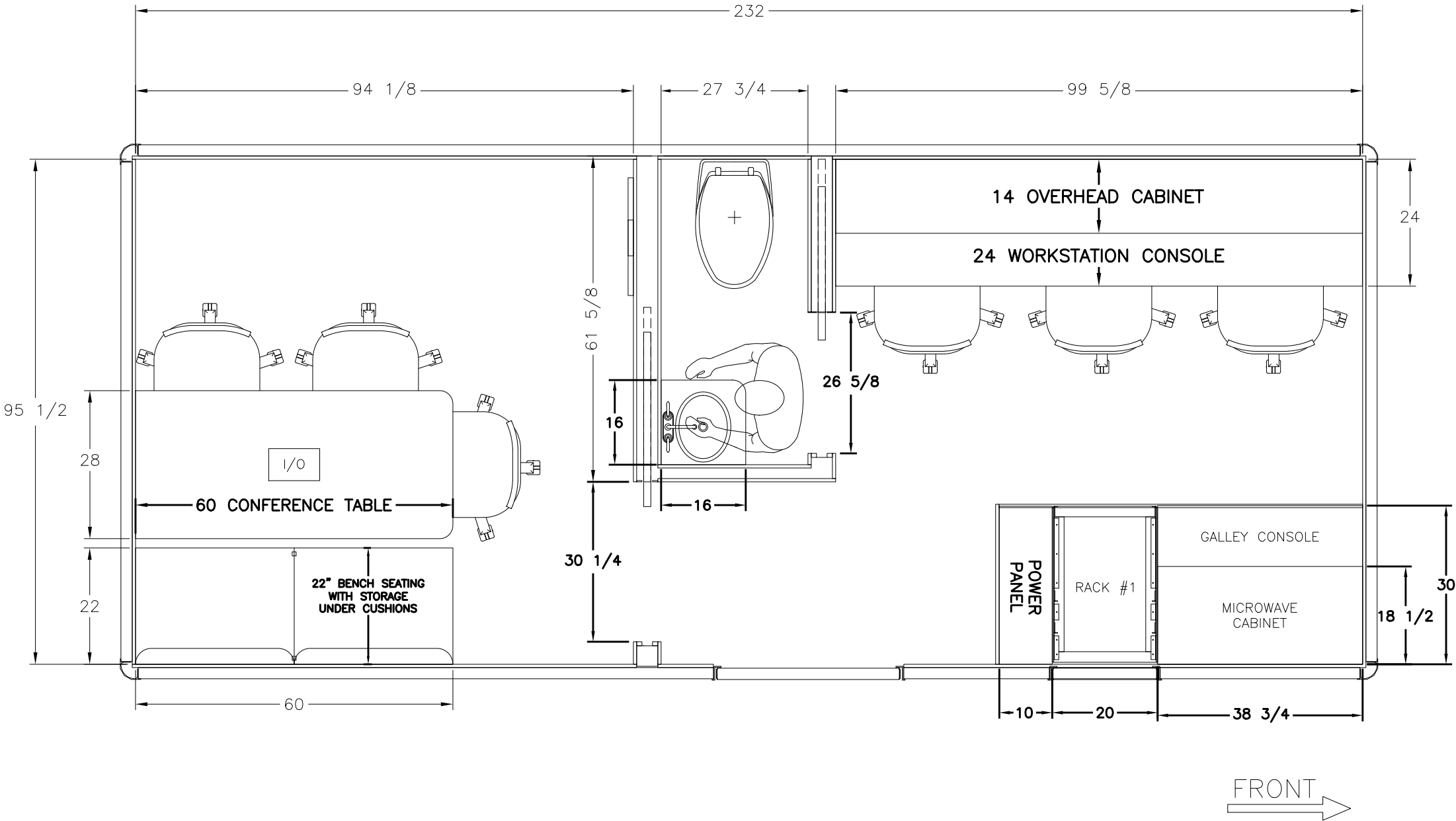
DO NOT SCALE THIS DRAWING DIMENSIONS ARE IN INCHES UNLESS OTHERWISE SPECIFIED TOLERANCES: ANGULAR: ± 1° BEND: ± 1' 2 PLACE DECIMAL ± .010 3 PLACE DECIMAL ± .005 FRACTIONS ± 1/16		MATERIAL SEE CALLOUTS		<div>FRONTLINE COMMUNICATIONS A Division of Pierce Manufacturing Inc.</div> <div>12770 44th Street North Clearwater, FL. 33762-4713 (727) 573-0400 FAX (727) 571-3295</div>	
		FINISH SEE W/O			
JOB NUMBER OR PRODUCT LINE 91972		DRAWN BY JRP	DATE 01/18/23	EXTERIOR LAYOUT CURB SIDE	
SHEET 1 OF 1		CHECKED BY JAA	DATE 01/18/23		
SCALE 1:32		SIZE B		DWG NO. 91972-50200	

REVISIONS					
CHK DATE	CHK BY	DESCRIPTION	DATE	BY	REV
05/12/23	MD	DELETED MOUSE HOLE PER CHANGE ORDER-2	05/12/23	JRP	00



DO NOT SCALE THIS DRAWING		MATERIAL SEE CALLOUTS		<div>FRONTLINE COMMUNICATIONS <small>A Division of Pierce Manufacturing Inc.</small></div> <div>12770 44th Street North Clearwater, FL. 33762-4713 (727) 573-0400 FAX (727) 571-3295</div>	
DIMENSIONS ARE IN INCHES UNLESS OTHERWISE SPECIFIED					
TOLERANCES: ANGULAR: ± 1° BEND: ± 1° 2 PLACE DECIMAL ± .010 3 PLACE DECIMAL ± .005 FRACTIONS ± 1/16		FINISH SEE W/O		EXTERIOR LAYOUT STREET SIDE	
JOB NUMBER OR PRODUCT LINE 91972					
DRAWN BY JRP		DATE 01/18/23		SIZE B	
CHECKED BY JAA		DATE 01/18/23			
DWG NO. 91972-50300					
SCALE 1:32					
SHEET 1 OF 1					

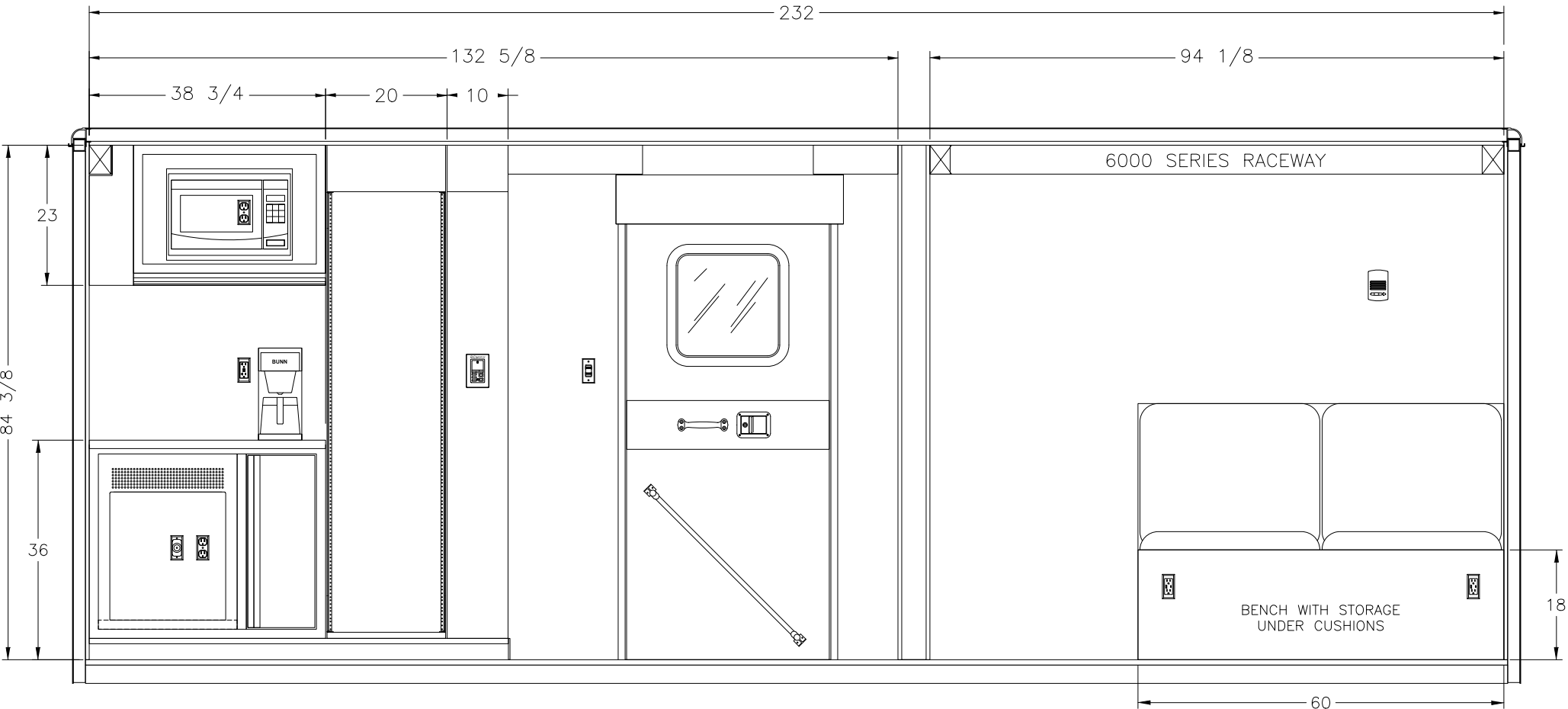
REVISIONS					
CHK DATE	CHK BY	DESCRIPTION	DATE	BY	REV
01/18/23	JAA	INITIAL RELEASE	01/18/23	JRP	00



DO NOT SCALE THIS DRAWING DIMENSIONS ARE IN INCHES UNLESS OTHERWISE SPECIFIED TOLERANCES: ANGULAR: ± 1° BEND: ± 1° 2 PLACE DECIMAL ± .010 3 PLACE DECIMAL ± .005 FRACTIONS ± 1/16		MATERIAL SEE CALLOUTS		<div>FRONTLINE COMMUNICATIONS A Division of Pierce Manufacturing Inc.</div> <div>12770 44th Street North Clearwater, FL 33762-4713 (727) 573-0400 FAX (727) 571-3295</div>	
		FINISH SEE W/O			
		INTERIOR LAYOUT FLOOR			
JOB NUMBER OR PRODUCT LINE 91972		DRAWN BY JRP	DATE 01/18/23	<div>SIZE B</div> <div>DWG NO. 91972-40100</div>	
SHEET 1 OF 1	SCALE 1:24	CHECKED BY JAA	DATE 01/18/23		

THIS DRAWING IS THE PROPERTY OF FRONTLINE COMMUNICATIONS CORPORATION. IT IS CONFIDENTIAL AND ALL RIGHTS ARE RESERVED. IT SHALL NOT BE REPRODUCED, COPIED, LENT, NOR USED FOR ANY PURPOSE OTHER THAN THAT FOR WHICH IT IS SPECIFICALLY FURNISHED.

REVISIONS					
CHK DATE	CHK BY	DESCRIPTION	DATE	BY	REV
01/18/23	JAA	INITIAL RELEASE	01/18/23	JRP	00



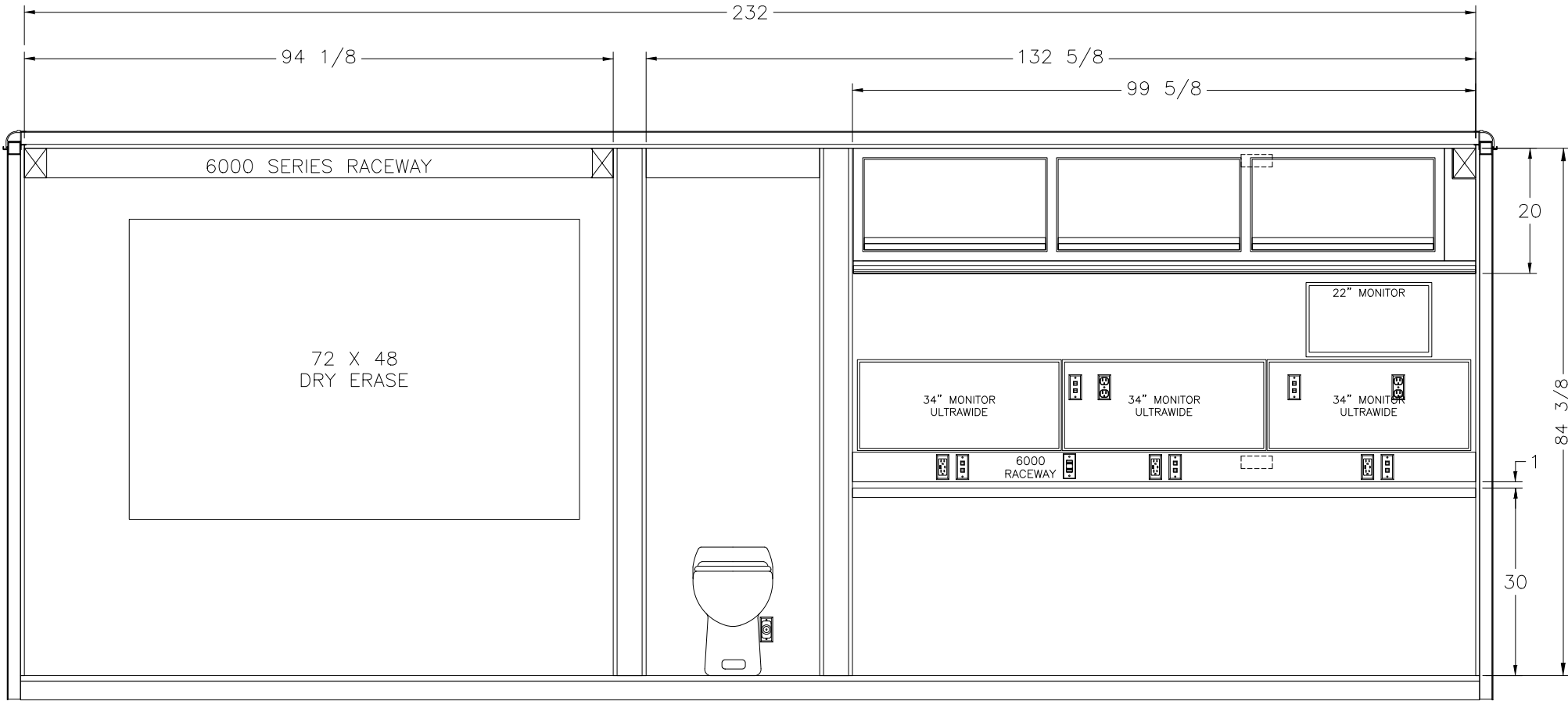
FRONT

- LIGHTING CONTROL
- A/C THERMOSTAT
- CO DETECTOR
- 120V AC POWER GFCI
- 120V AC DUPLEX RECEPTACLE W/ USB A & C)
- 120 VAC DUPLEX RECEPTACLE
- 12 VDC WIRING

THIS DRAWING IS THE PROPERTY OF FRONTLINE COMMUNICATIONS CORPORATION. IT IS CONFIDENTIAL AND ALL RIGHTS ARE RESERVED. IT SHALL NOT BE REPRODUCED, COPIED, LENT, NOR USED FOR ANY PURPOSE OTHER THAN THAT FOR WHICH IT IS SPECIFICALLY FURNISHED.

DO NOT SCALE THIS DRAWING DIMENSIONS ARE IN INCHES UNLESS OTHERWISE SPECIFIED TOLERANCES: ANGULAR: ± 1° BEND: ± 1° 2 PLACE DECIMAL ± .010 3 PLACE DECIMAL ± .005 FRACTIONS ± 1/16		MATERIAL SEE CALLOUTS		<div>FRONTLINE COMMUNICATIONS A Division of Pierce Manufacturing Inc.</div> <div>12770 44th Street North Clearwater, FL. 33762-4713 (727) 573-0400 FAX (727) 571-3295</div>	
		FINISH SEE W/O			
JOB NUMBER OR PRODUCT LINE 91972		DRAWN BY JRP	DATE 01/18/23	INTERIOR LAYOUT CURB SIDE	
SHEET 1 OF 1	SCALE 1:24	CHECKED BY JAA	DATE 01/18/23		
		SIZE B	DWG NO. 91972-40200		

REVISIONS					
CHK DATE	CHK BY	DESCRIPTION	DATE	BY	REV
01/18/23	JAA	INITIAL RELEASE	01/18/23	JRP	00

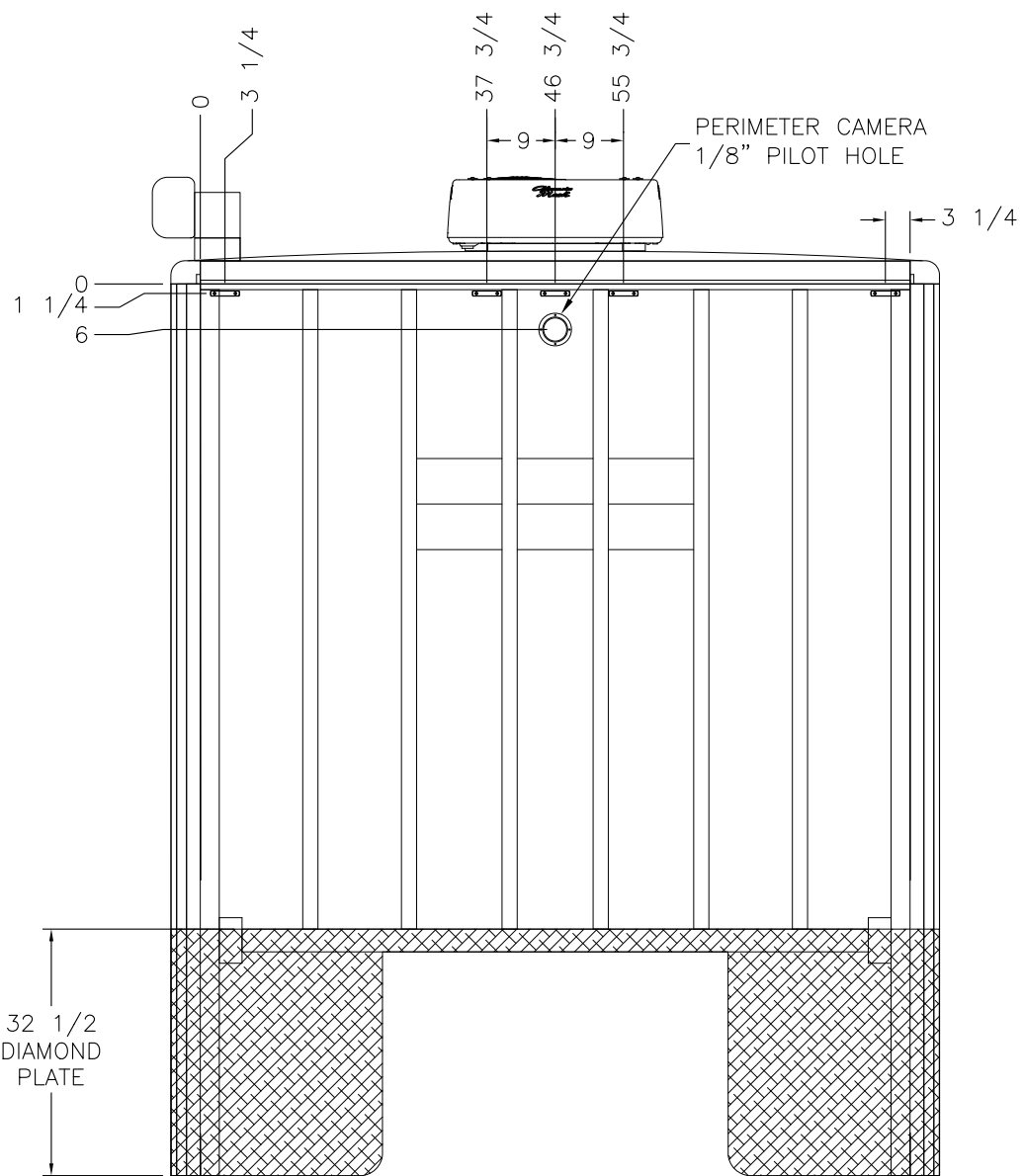
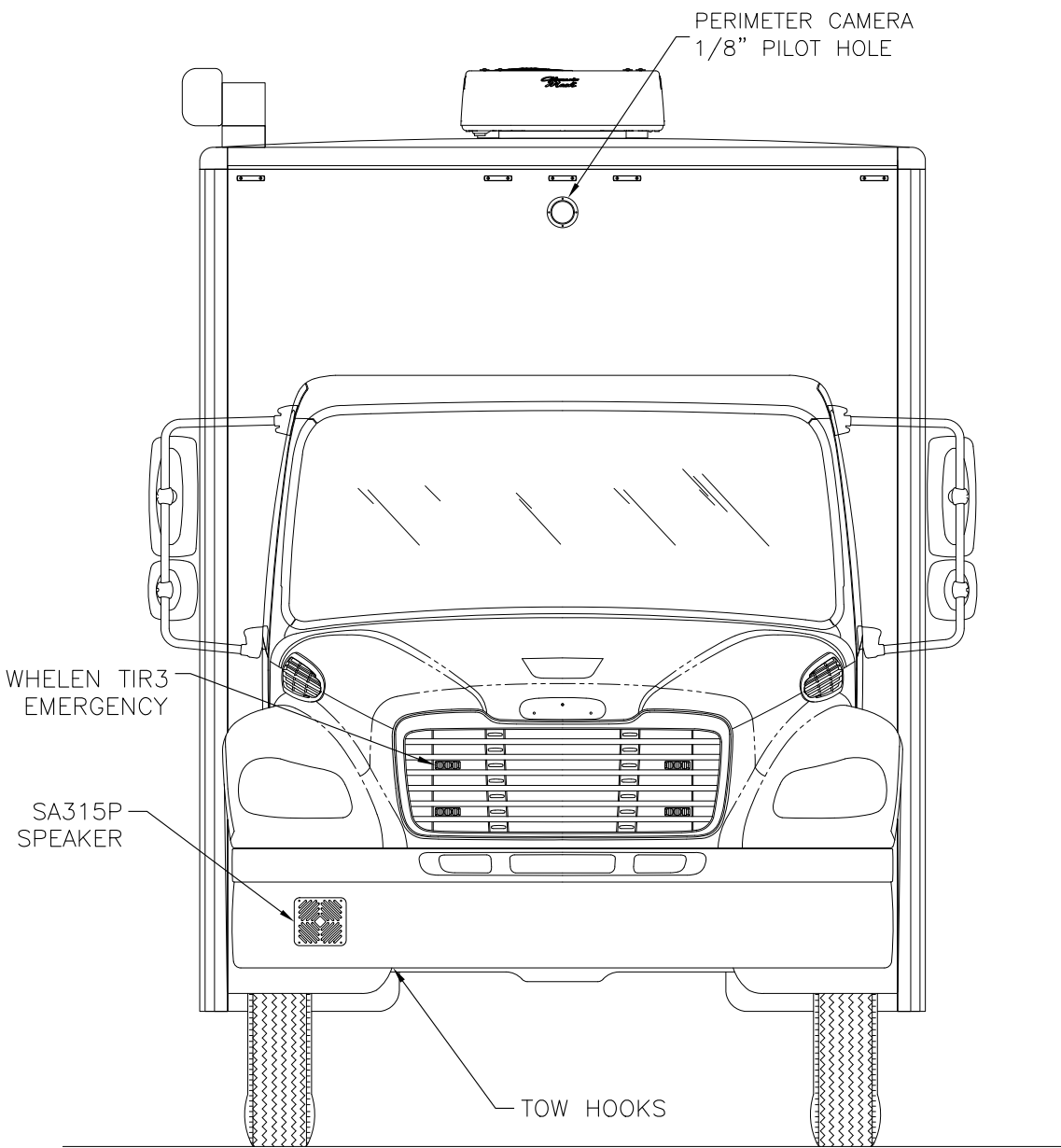


FRONT

- LOW VOLTAGE DEVICE RING (SYSTEMS WIRING)
- 120V AC DUPLEX RECEPTACLE W/ USB A & C)
- 120 VAC DUPLEX RECEPTACLE
- 12 VDC WIRING
- LIGHTING CONTROL

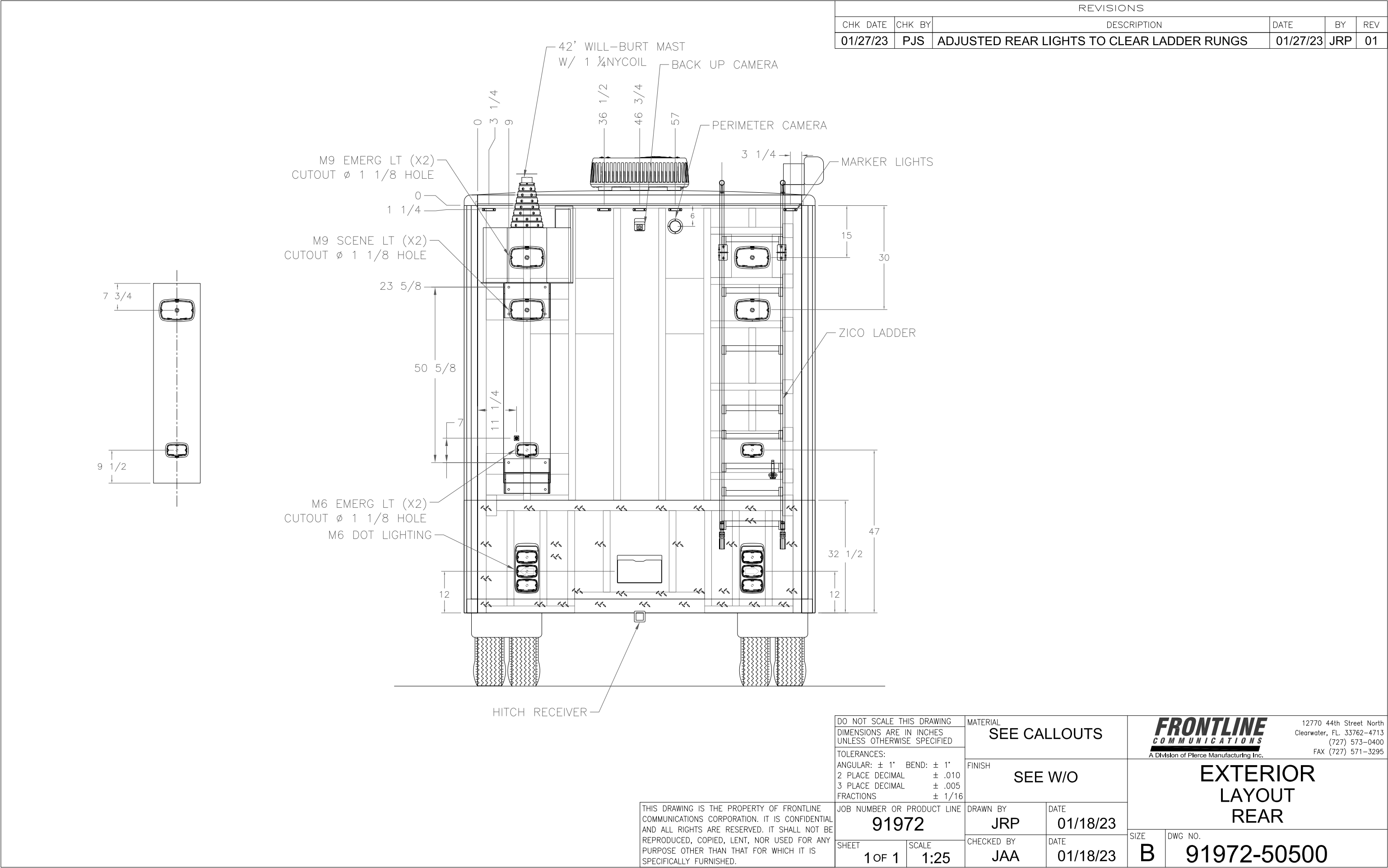
THIS DRAWING IS THE PROPERTY OF FRONTLINE COMMUNICATIONS CORPORATION. IT IS CONFIDENTIAL AND ALL RIGHTS ARE RESERVED. IT SHALL NOT BE REPRODUCED, COPIED, LENT, NOR USED FOR ANY PURPOSE OTHER THAN THAT FOR WHICH IT IS SPECIFICALLY FURNISHED.

DO NOT SCALE THIS DRAWING DIMENSIONS ARE IN INCHES UNLESS OTHERWISE SPECIFIED		MATERIAL SEE CALLOUTS		<div>FRONTLINE COMMUNICATIONS A Division of Pierce Manufacturing Inc.</div> <div>12770 44th Street North Clearwater, FL. 33762-4713 (727) 573-0400 FAX (727) 571-3295</div>	
TOLERANCES: ANGULAR: ± 1° BEND: ± 1° 2 PLACE DECIMAL ± .010 3 PLACE DECIMAL ± .005 FRACTIONS ± 1/16					
JOB NUMBER OR PRODUCT LINE 91972		DRAWN BY JRP	DATE 01/18/23	INTERIOR LAYOUT STREET SIDE	
SHEET 1 OF 1	SCALE 1:24	CHECKED BY JAA	DATE 01/18/23		



THIS DRAWING IS THE PROPERTY OF FRONTLINE COMMUNICATIONS CORPORATION. IT IS CONFIDENTIAL AND ALL RIGHTS ARE RESERVED. IT SHALL NOT BE REPRODUCED, COPIED, LENT, NOR USED FOR ANY PURPOSE OTHER THAN THAT FOR WHICH IT IS SPECIFICALLY FURNISHED.

DO NOT SCALE THIS DRAWING DIMENSIONS ARE IN INCHES UNLESS OTHERWISE SPECIFIED		MATERIAL SEE CALLOUTS		<div>FRONTLINE COMMUNICATIONS <small>A Division of Pierce Manufacturing Inc.</small></div> <div>12770 44th Street North Clearwater, FL. 33762-4713 (727) 573-0400 FAX (727) 571-3295</div>	
TOLERANCES: ANGULAR: ± 1° BEND: ± 1° 2 PLACE DECIMAL ± .010 3 PLACE DECIMAL ± .005 FRACTIONS ± 1/16					
JOB NUMBER OR PRODUCT LINE 91972		FINISH SEE W/O		EXTERIOR LAYOUT FRONT	
SHEET 1 OF 1 SCALE 1:25		DRAWN BY JRP DATE 01/18/23 CHECKED BY JAA DATE 01/18/23			
				SIZE B	DWG NO. 91972-50400



THIS DRAWING IS THE PROPERTY OF FRONTLINE COMMUNICATIONS CORPORATION. IT IS CONFIDENTIAL AND ALL RIGHTS ARE RESERVED. IT SHALL NOT BE REPRODUCED, COPIED, LENT, NOR USED FOR ANY PURPOSE OTHER THAN THAT FOR WHICH IT IS SPECIFICALLY FURNISHED.

DO NOT SCALE THIS DRAWING DIMENSIONS ARE IN INCHES UNLESS OTHERWISE SPECIFIED		MATERIAL SEE CALLOUTS		<div>FRONTLINE COMMUNICATIONS A Division of Pierce Manufacturing Inc.</div> <div>12770 44th Street North Clearwater, FL 33762-4713 (727) 573-0400 FAX (727) 571-3295</div>	
TOLERANCES: ANGULAR: ± 1° BEND: ± 1° 2 PLACE DECIMAL ± .010 3 PLACE DECIMAL ± .005 FRACTIONS ± 1/16					
JOB NUMBER OR PRODUCT LINE 91972		FINISH SEE W/O		EXTERIOR LAYOUT REAR	
SHEET 1 OF 1		DRAWN BY JRP DATE 01/18/23			
SCALE 1:25		CHECKED BY JAA DATE 01/18/23		SIZE B	DWG NO. 91972-50500