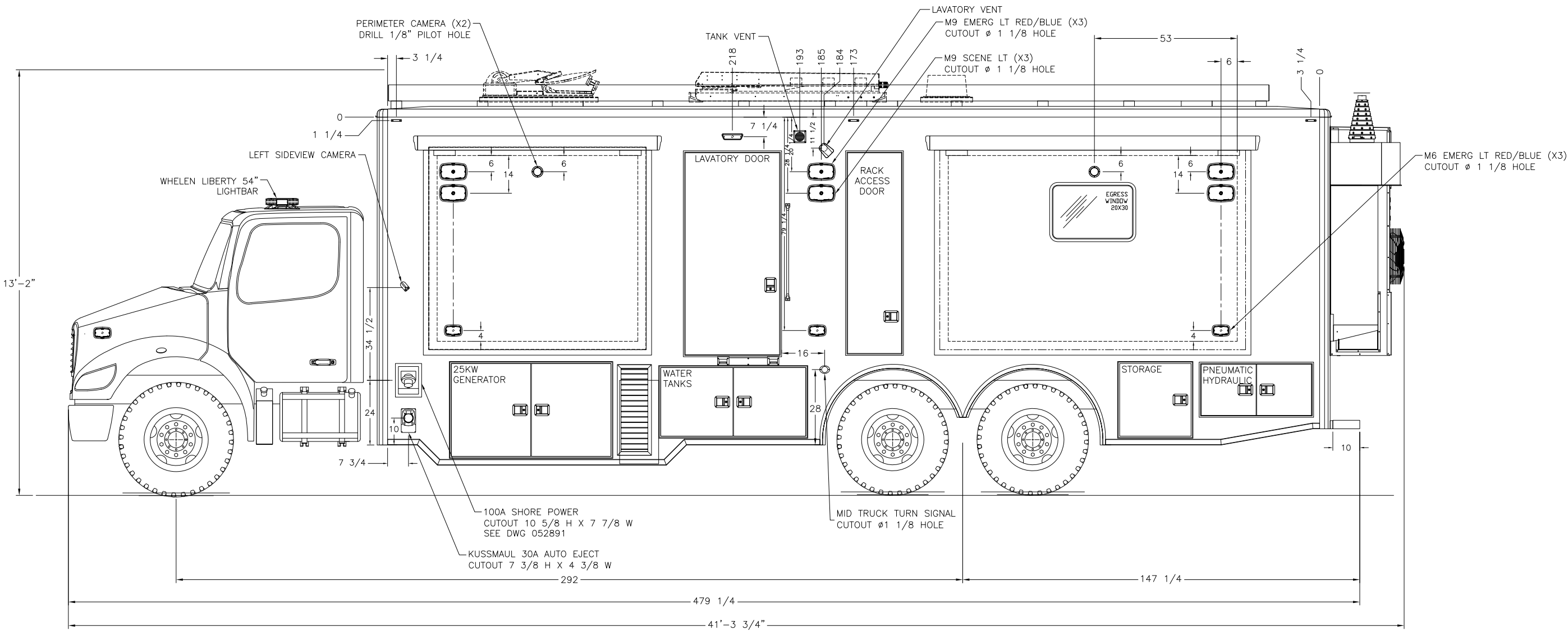




REVISIONS					
CHK DATE	CHK BY	DESCRIPTION	DATE	BY	REV
10/10/22	PJS	MOVED VENT CLAM SHELL	10/10/22	JRP	01

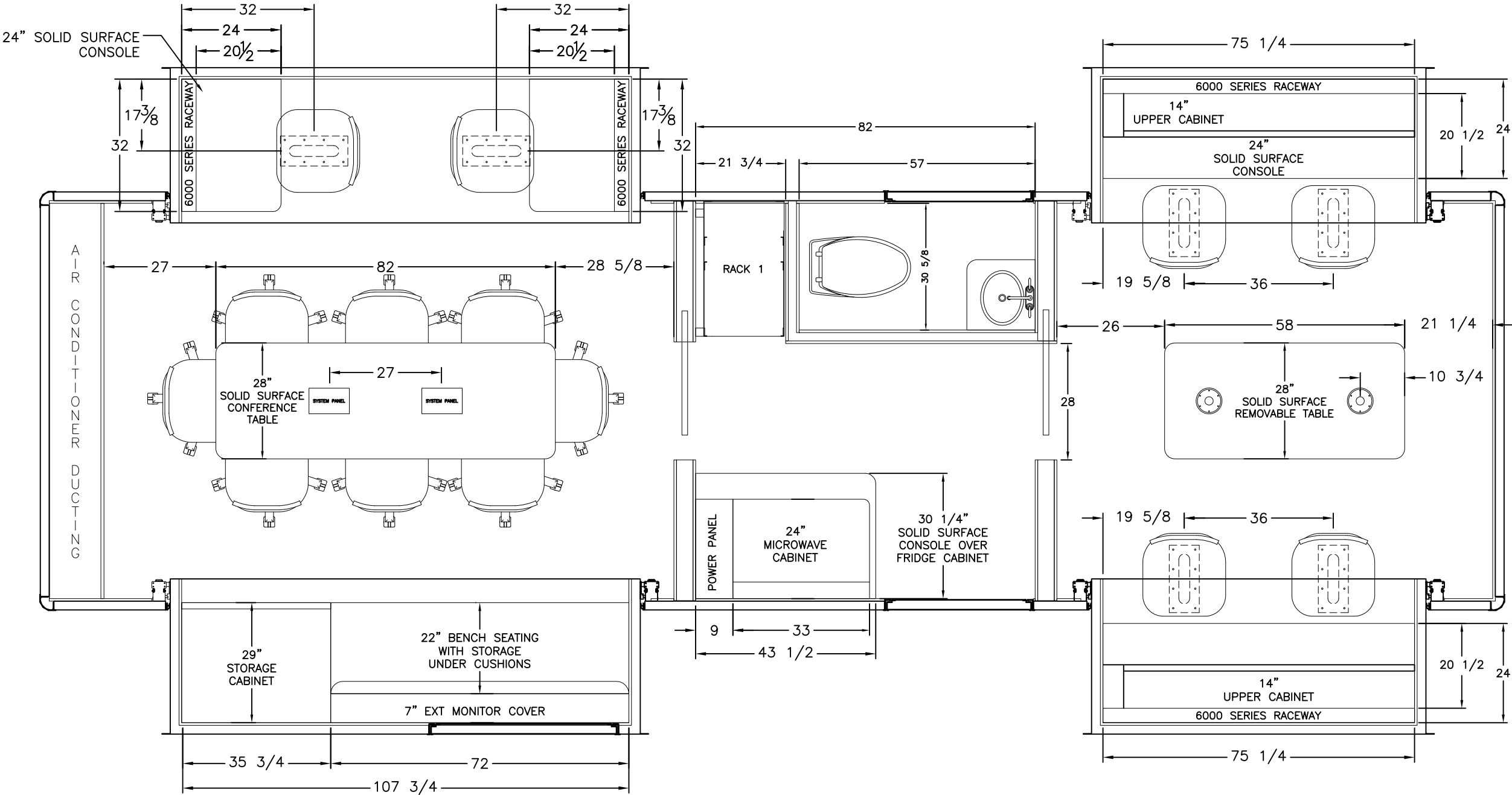


DO NOT SCALE THIS DRAWING		MATERIAL  <b>SEE CALLOUTS</b>		<div><b>FRONTLINE</b> <b>COMMUNICATIONS</b> <small>A Division of Pierce Manufacturing Inc.</small></div> <div>12770 44th Street North Clearwater, FL. 33762-4713 (727) 573-0400 FAX (727) 571-3295</div>	
DIMENSIONS ARE IN INCHES UNLESS OTHERWISE SPECIFIED					
TOLERANCES: ANGULAR: ± 1° BEND: ± 1° 2 PLACE DECIMAL ± .010 3 PLACE DECIMAL ± .005 FRACTIONS ± 1/16		FINISH  <b>SEE W/O</b>		<b>EXTERIOR LAYOUT STREET SIDE</b>	
JOB NUMBER OR PRODUCT LINE  <b>91966</b>					
DRAWN BY <b>JRP</b>		DATE <b>08/05/22</b>		SIZE <b>B</b>	
CHECKED BY <b>PJS</b>		DATE <b>08/05/22</b>			
DWG NO. <b>91966-50300</b>					





REVISIONS					
CHK DATE	CHK BY	DESCRIPTION	DATE	BY	REV
08/23/22	PJS	INITIAL RELEASE	08/23/22	JRP	00



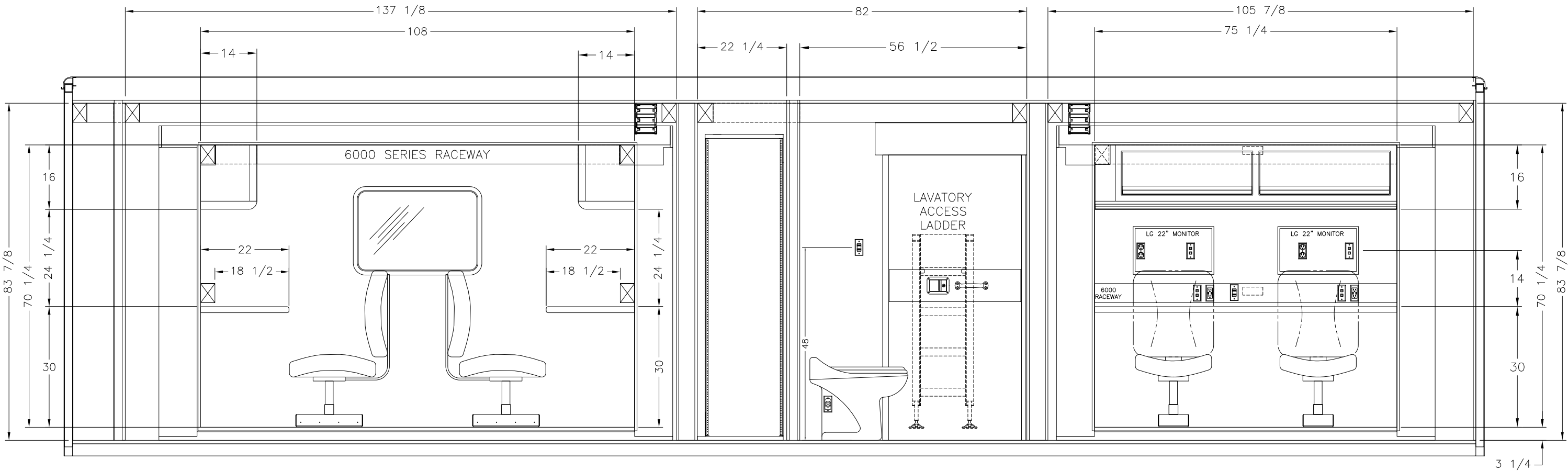
- NOTES:
- 1) CONSOLES SOLID SURFACE ANTHRACITE
  - 2) LAVATORY ACCESSIBLE FROM THE EXTERIOR

THIS DRAWING IS THE PROPERTY OF FRONTLINE COMMUNICATIONS CORPORATION. IT IS CONFIDENTIAL AND ALL RIGHTS ARE RESERVED. IT SHALL NOT BE REPRODUCED, COPIED, LENT, NOR USED FOR ANY PURPOSE OTHER THAN THAT FOR WHICH IT IS SPECIFICALLY FURNISHED.

DO NOT SCALE THIS DRAWING		MATERIAL  N/A		<div><div><div>12770 44th Street North Clearwater, FL. 33762-4713 (727) 573-0400 FAX (727) 571-3295</div><div><div><div>FRONTLINE</div><div>COMMUNICATIONS</div><div>A Division of Pierce Manufacturing Inc.</div></div></div></div></div>	
DIMENSIONS ARE IN INCHES UNLESS OTHERWISE SPECIFIED					
TOLERANCES: ANGULAR: ± 1°    BEND: ± 1° 2 PLACE DECIMAL    ± .010 3 PLACE DECIMAL    ± .005 FRACTIONS    ± 1/16					
JOB NUMBER OR PRODUCT LINE  91966		DRAWN BY  JRP		DATE  08/23/22	
SHEET  1 OF 1		SCALE  1:28		CHECKED BY  PJS	
				DATE  08/23/22	
				SIZE  B	
				DWG NO.  91966-40100	

FRONT





- 120V AC POWER POINT (DUPLEX w/ DUAL USB)
- 120 VAC POWER POINT
- 12 VDC WIRING
- LIGHTING CONTROL
- LOW VOLTAGE DEVICE RING (SYSTEMS WIRING)

FRONT

THIS DRAWING IS THE PROPERTY OF FRONTLINE COMMUNICATIONS CORPORATION. IT IS CONFIDENTIAL AND ALL RIGHTS ARE RESERVED. IT SHALL NOT BE REPRODUCED, COPIED, LENT, NOR USED FOR ANY PURPOSE OTHER THAN THAT FOR WHICH IT IS SPECIFICALLY FURNISHED.

DO NOT SCALE THIS DRAWING DIMENSIONS ARE IN INCHES UNLESS OTHERWISE SPECIFIED		MATERIAL <b>SEE CALLOUTS</b>		 12770 44th Street North Clearwater, FL 33762-4713 (727) 573-0400 FAX (727) 571-3295	
TOLERANCES: ANGULAR: ± 1° BEND: ± 1° 2 PLACE DECIMAL ± .010 3 PLACE DECIMAL ± .005 FRACTIONS ± 1/16		FINISH <b>SEE W/O</b>			
JOB NUMBER OR PRODUCT LINE <b>91966</b>		DRAWN BY <b>JRP</b>		DATE <b>08/23/22</b>	
SHEET <b>1 OF 1</b>		SCALE <b>1:25</b>		CHECKED BY <b>PJS</b>	
		DATE <b>08/23/22</b>		SIZE <b>B</b>	DWG NO. <b>91966-40300</b>

INTERIOR  
LAYOUT  
STREET SIDE