

THIS DRAWING IS THE PROPERTY OF PIERCE MANUFACTURING. IT IS CONFIDENTIAL AND ALL RIGHTS ARE RESERVED. IT SHALL NOT BE REPRODUCED, COPIED, LENT, OR USED FOR ANY PURPOSE OTHER THAN THAT FOR WHICH IT IS SPECIFICALLY FURNISHED.

BID # 000
 REP: Steve Williamson - Frontline Communications
 DEALER: Atlantic Emergency Solutions

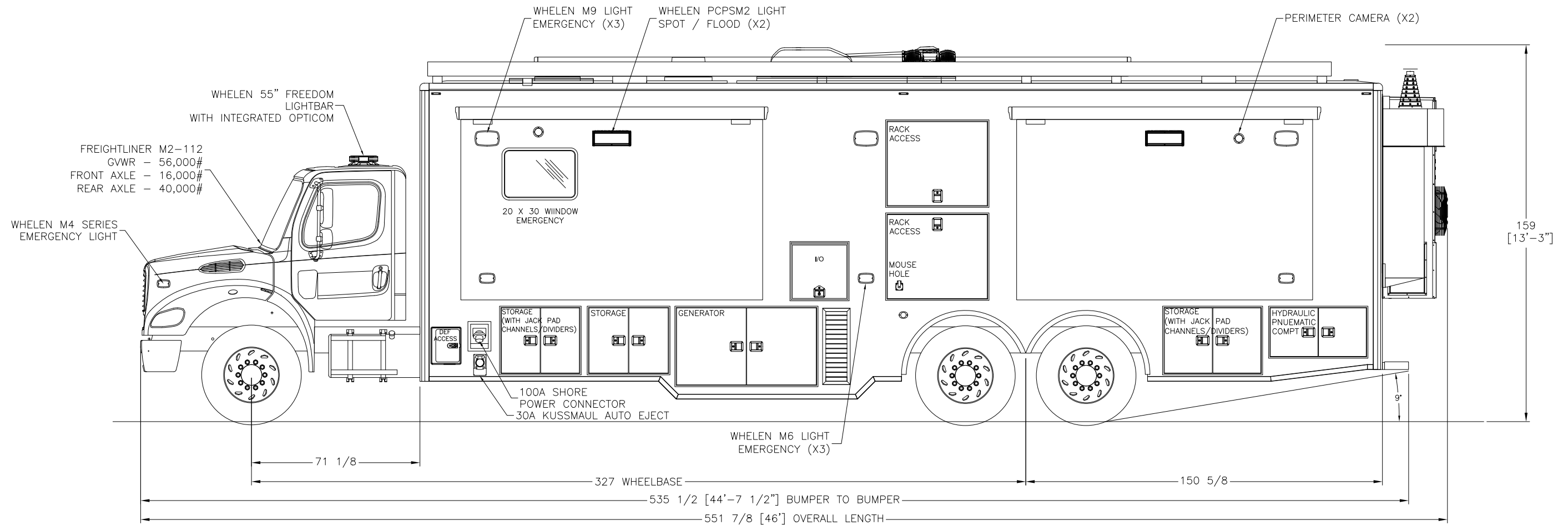
PRELIMINARY USE ONLY
 THIS DRAWING IS FOR REPRESENTATION ONLY. DETAILED ENGINEERING DRAWINGS WILL BE CREATED FOR MANUFACTURING. CHANGES MAY BE REQUIRED TO ACCOMMODATE MANUFACTURING REQUIREMENTS AND CUSTOMER SPECIFICATIONS.

FRONTLINE
COMMUNICATIONS
 An Oshkosh Corporation Company

DRAWN	JRP	DATE	11/25/24
SHEET	1 OF 6	NOT TO SCALE	

Kent County
 Mobile Command Unit
 C-45 X-4 - M2-112

SIZE	DWG NO.	REV
B	P2023-52	B



THIS DRAWING IS THE PROPERTY OF PIERCE MANUFACTURING. IT IS CONFIDENTIAL AND ALL RIGHTS ARE RESERVED. IT SHALL NOT BE REPRODUCED, COPIED, LENT, OR USED FOR ANY PURPOSE OTHER THAN THAT FOR WHICH IT IS SPECIFICALLY FURNISHED.

BID # 000

REP: Steve Williamson - Frontline Communications

DEALER: Atlantic Emergency Solutions

PRELIMINARY USE ONLY

THIS DRAWING IS FOR REPRESENTATION ONLY. DETAILED ENGINEERING DRAWINGS WILL BE CREATED FOR MANUFACTURING. CHANGES MAY BE REQUIRED TO ACCOMMODATE MANUFACTURING REQUIREMENTS AND CUSTOMER SPECIFICATIONS.

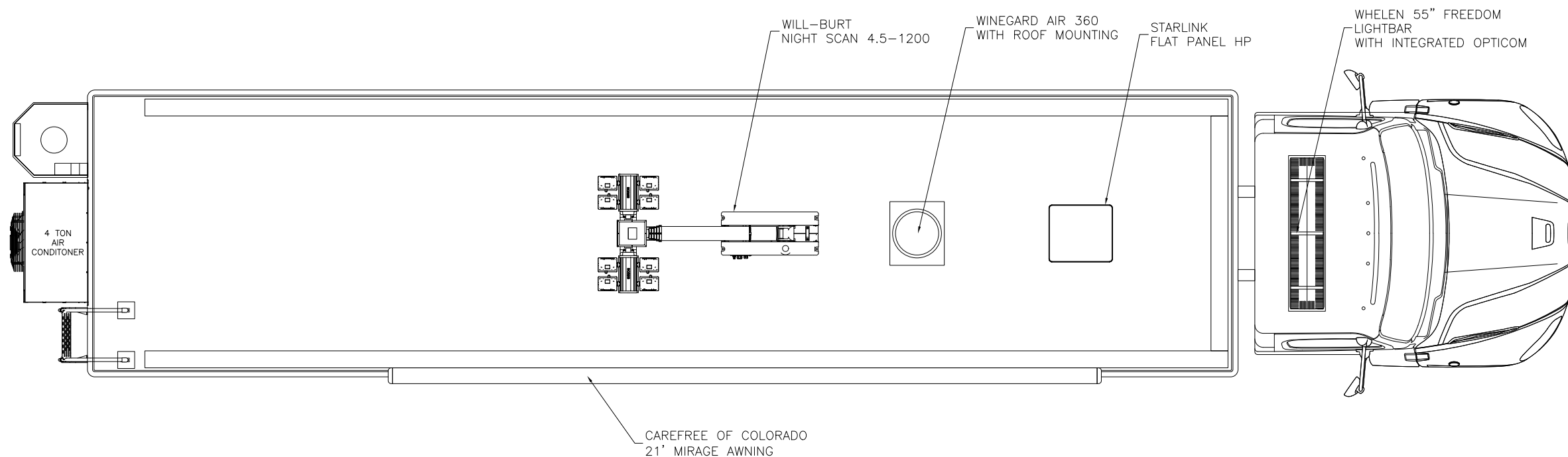
FRONTLINE
COMMUNICATIONS

An Oshkosh Corporation Company

DRAWN	JRP	DATE	11/25/24
SHEET	2 OF 6	NOT TO SCALE	

Kent County
Mobile Command Unit
C-45 X-4 - M2-112

SIZE	DWG NO.	REV
B	P2023-52	B



THIS DRAWING IS THE PROPERTY OF PIERCE MANUFACTURING. IT IS CONFIDENTIAL AND ALL RIGHTS ARE RESERVED. IT SHALL NOT BE REPRODUCED, COPIED, LENT, OR USED FOR ANY PURPOSE OTHER THAN THAT FOR WHICH IT IS SPECIFICALLY FURNISHED.

BID # 000

REP: Steve Williamson - Frontline Communications

DEALER: Atlantic Emergency Solutions

PRELIMINARY USE ONLY

THIS DRAWING IS FOR REPRESENTATION ONLY. DETAILED ENGINEERING DRAWINGS WILL BE CREATED FOR MANUFACTURING. CHANGES MAY BE REQUIRED TO ACCOMMODATE MANUFACTURING REQUIREMENTS AND CUSTOMER SPECIFICATIONS.

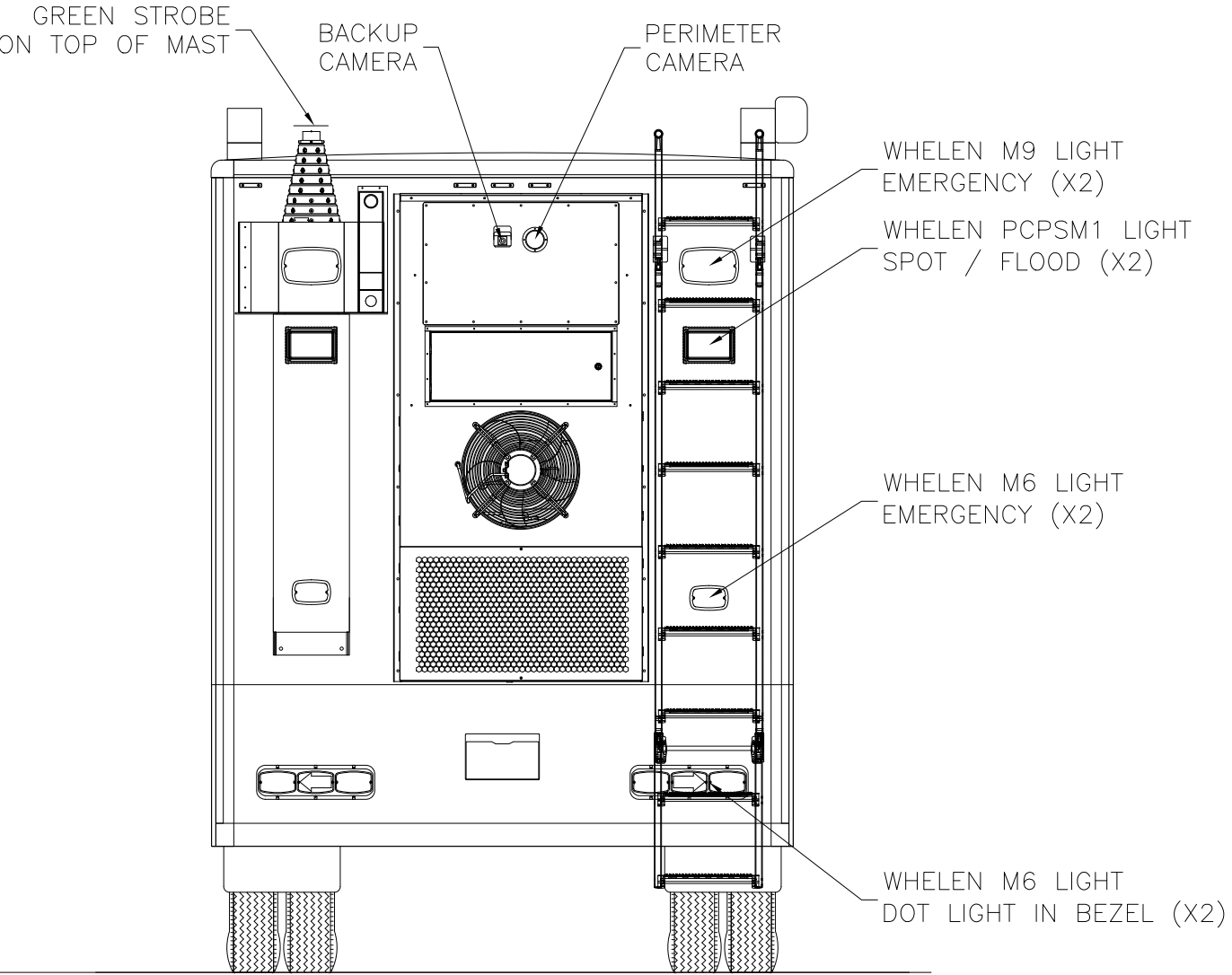
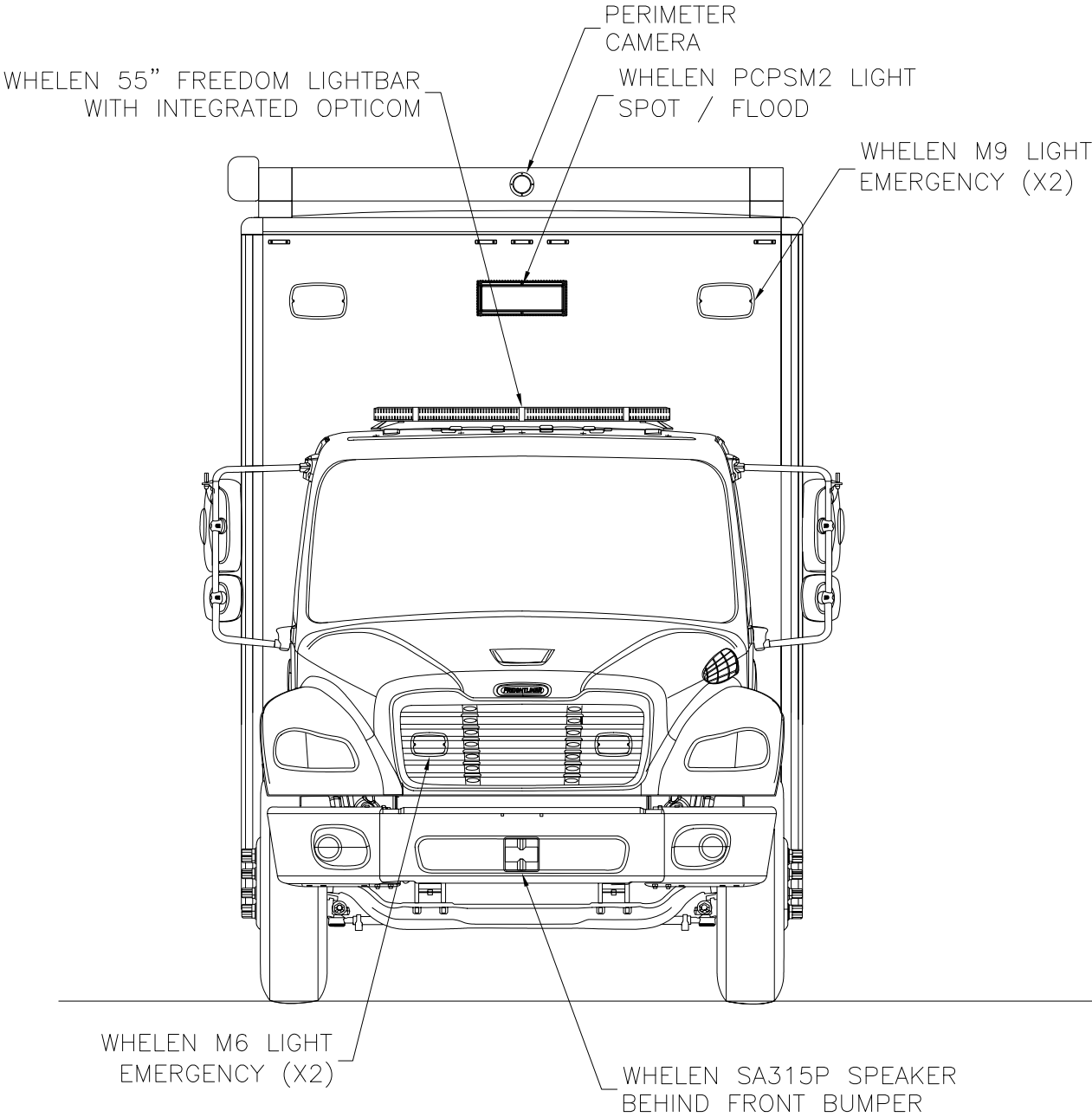
FRONTLINE
COMMUNICATIONS

An Oshkosh Corporation Company

DRAWN	JRP	DATE	11/25/24
SHEET	3 OF 6	NOT TO SCALE	

Kent County
Mobile Command Unit
C-45 X-4 - M2-112

SIZE	DWG NO.	REV
B	P2023-52	B

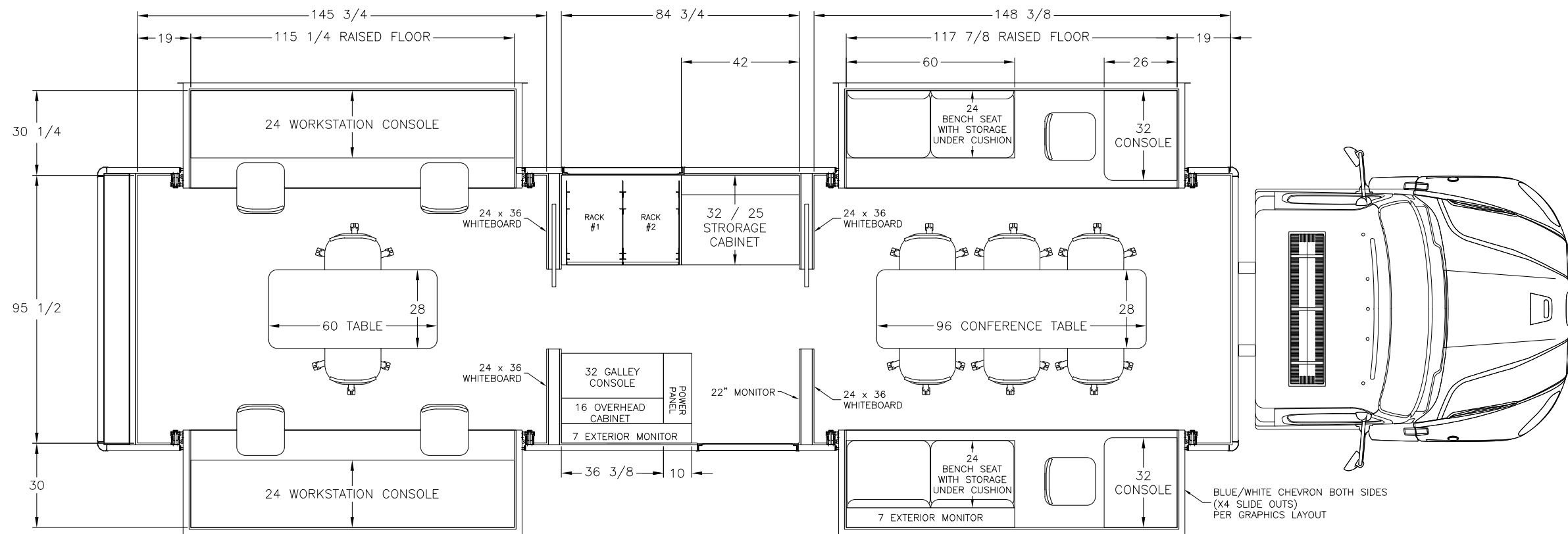


THIS DRAWING IS THE PROPERTY OF PIERCE MANUFACTURING. IT IS CONFIDENTIAL AND ALL RIGHTS ARE RESERVED. IT SHALL NOT BE REPRODUCED, COPIED, LENT, OR USED FOR ANY PURPOSE OTHER THAN THAT FOR WHICH IT IS SPECIFICALLY FURNISHED.

BID # 000
REP: Steve Williamson - Frontline Communications
DEALER: Atlantic Emergency Solutions

PRELIMINARY USE ONLY
THIS DRAWING IS FOR REPRESENTATION ONLY. DETAILED ENGINEERING DRAWINGS WILL BE CREATED FOR MANUFACTURING. CHANGES MAY BE REQUIRED TO ACCOMMODATE MANUFACTURING REQUIREMENTS AND CUSTOMER SPECIFICATIONS.

FRONTLINE COMMUNICATIONS An Oshkosh Corporation Company			Kent County Mobile Command Unit C-45 X-4 - M2-112		
DRAWN	JRP	DATE	11/25/24	SIZE	DWG NO.
SHEET	4 OF 6	NOT TO SCALE		B	P2023-52
					REV
					B



- NOTES:
- 1) CONSOLES – SOLID SURFACE DOVE GRAY
 - 2) RACK TO INCLUDE A REMOVABLE MESH DOORS
 - 3) FLOORING BLACK LONSEAL
 - 4) WALLS GRAY SOUND ABSORBING CARPET
 - 5) WORK STATION OUTLETS 120 VAC WITH DUAL USB C
 - 6) ALL CEILING LIGHTS TO BE RED/WHITE
 - 7) SPEAKER ON CEILING 1 IN REAR AND 1 IN FRONT ROOM
 - 8) STORAGE CABINET LOWER SECTION WILL HAVE REDUCED DEPTH TO ACCOMODATE THE EXTERIOR I/O.

THIS DRAWING IS THE PROPERTY OF PIERCE MANUFACTURING. IT IS CONFIDENTIAL AND ALL RIGHTS ARE RESERVED. IT SHALL NOT BE REPRODUCED, COPIED, LENT, OR USED FOR ANY PURPOSE OTHER THAN THAT FOR WHICH IT IS SPECIFICALLY FURNISHED.

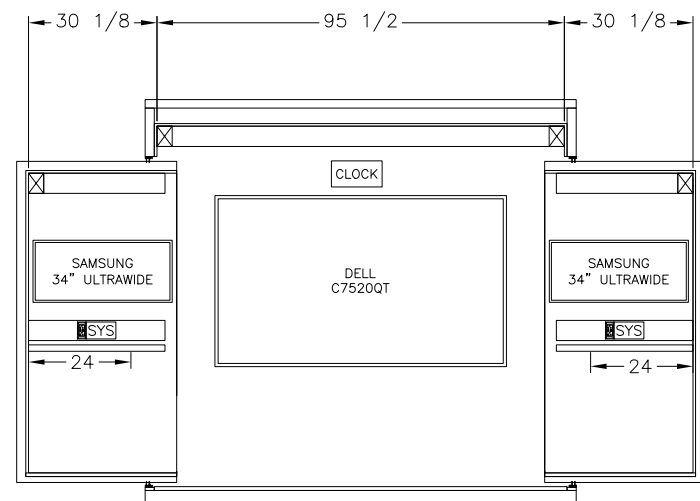
BID # 000
 REP: Steve Williamson - Frontline Communications
 DEALER: Atlantic Emergency Solutions

PRELIMINARY USE ONLY
 THIS DRAWING IS FOR REPRESENTATION ONLY. DETAILED ENGINEERING DRAWINGS WILL BE CREATED FOR MANUFACTURING. CHANGES MAY BE REQUIRED TO ACCOMMODATE MANUFACTURING REQUIREMENTS AND CUSTOMER SPECIFICATIONS.

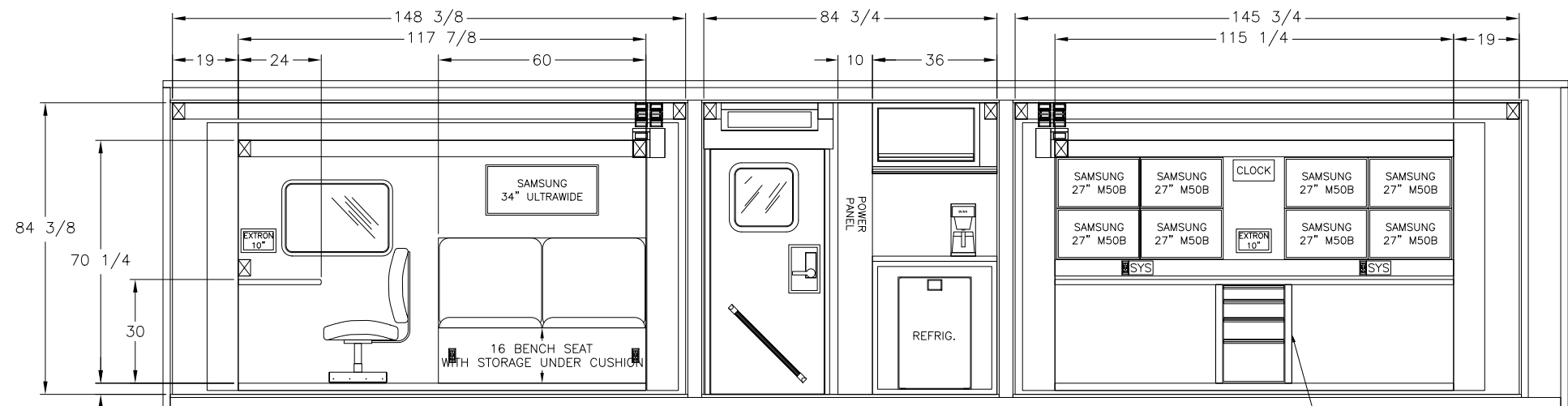
FRONTLINE
 COMMUNICATIONS
 An Oshkosh Corporation Company

DRAWN JRP DATE 11/25/24
 SHEET 5 OF 6 NOT TO SCALE

Kent County
 Mobile Command Unit
 C-45 X-4 - M2-112
 SIZE B DWG NO. P2023-52 REV B

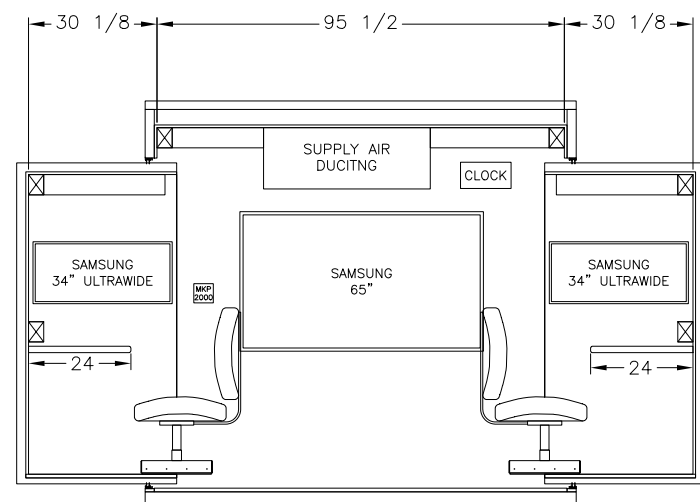


FRONT WALL INTERIOR LAYOUT

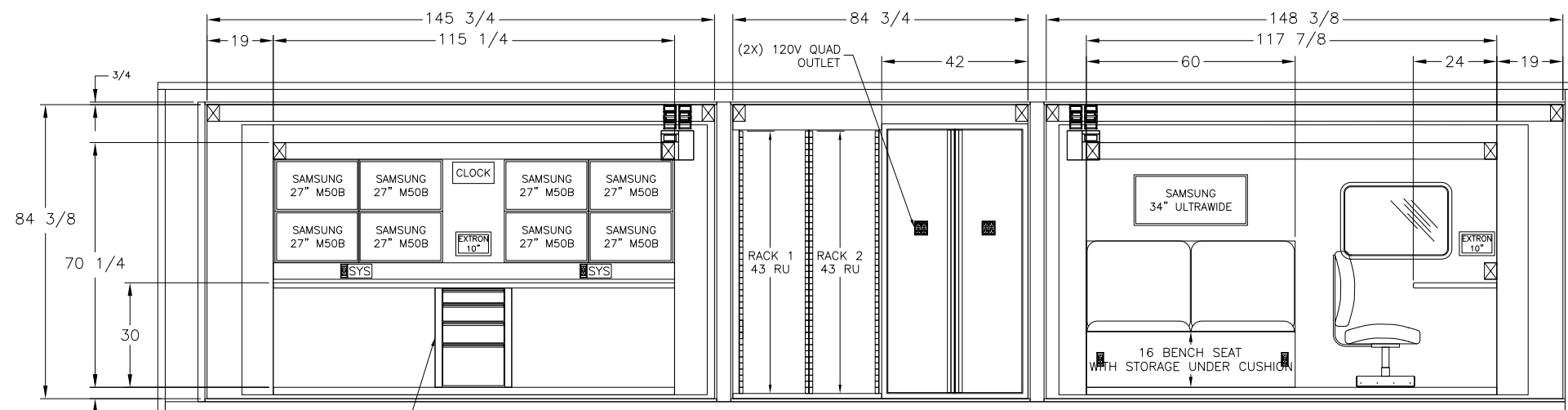


PASSENGER SIDE INTERIOR LAYOUT

3-DRAWER CABINET
(TOP TO BE PULL-OUT
WORK SURFACE)



REAR WALL INTERIOR LAYOUT



DRIVER SIDE INTERIOR LAYOUT

3-DRAWER CABINET
(TOP TO BE PULL-OUT
WORK SURFACE)

THIS DRAWING IS THE PROPERTY OF PIERCE MANUFACTURING. IT IS CONFIDENTIAL AND ALL RIGHTS ARE RESERVED. IT SHALL NOT BE REPRODUCED, COPIED, LENT, OR USED FOR ANY PURPOSE OTHER THAN THAT FOR WHICH IT IS SPECIFICALLY FURNISHED.

BID # 000

REP: Steve Williamson - Frontline Communications

DEALER: Atlantic Emergency Solutions

PRELIMINARY USE ONLY

THIS DRAWING IS FOR REPRESENTATION ONLY. DETAILED ENGINEERING DRAWINGS WILL BE CREATED FOR MANUFACTURING. CHANGES MAY BE REQUIRED TO ACCOMMODATE MANUFACTURING REQUIREMENTS AND CUSTOMER SPECIFICATIONS.

FRONTLINE
COMMUNICATIONS

An Oshkosh Corporation Company

DRAWN

JRP

DATE

11/25/24

SHEET

6 OF 6

NOT TO SCALE

Kent County
Mobile Command Unit
C-45 X-4 - M2-112

SIZE

B

DWG NO.

P2023-52

REV

B