

A Division of Pierce Manufacturing Inc.

Lexington County SC
Mobile Command Unit
C-42 X-2 - Enforcer

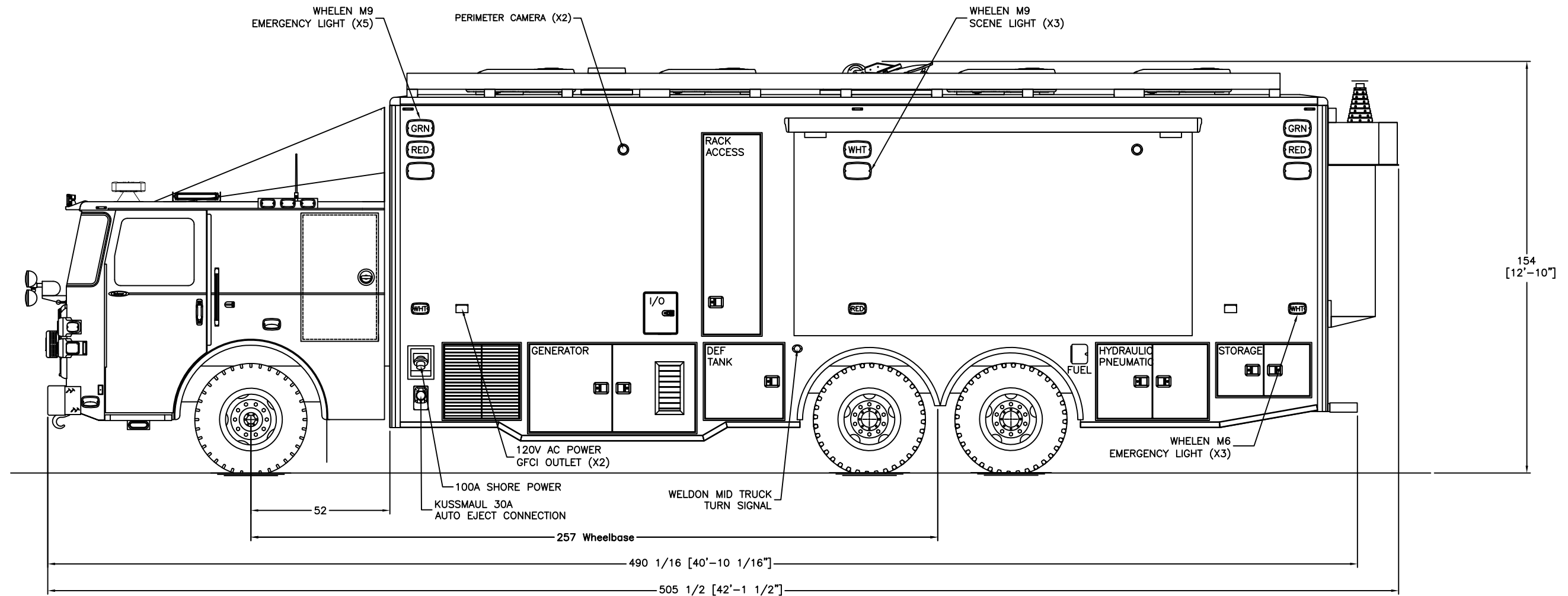
DRAWN	MRS	DATE	6/14/23
SHEET	1 OF 6	NOT TO SCALE	

SIZE	DWG NO.	REV
B	P2022-102	A

THIS DRAWING IS THE PROPERTY OF PIERCE MANUFACTURING. IT IS CONFIDENTIAL AND ALL RIGHTS ARE RESERVED. IT SHALL NOT BE REPRODUCED, COPIED, LENT, OR USED FOR ANY PURPOSE OTHER THAN THAT FOR WHICH IT IS SPECIFICALLY FURNISHED.

BID # 000
REP: Spartan
DEALER: Andy Callaway - Frontline Communications

PRELIMINARY USE ONLY
THIS DRAWING IS FOR REPRESENTATION ONLY. DETAILED ENGINEERING DRAWINGS WILL BE CREATED FOR MANUFACTURING. CHANGES MAY BE REQUIRED TO ACCOMMODATE MANUFACTURING REQUIREMENTS AND CUSTOMER SPECIFICATIONS.



Lexington County SC
Mobile Command Unit
C-42 X-2 - Enforcer

DRAWN	MRS	DATE	6/14/23	SIZE	DWG NO.	REV
SHEET	2 OF 6	NOT TO SCALE		B	P2022-102	A

PRELIMINARY USE ONLY

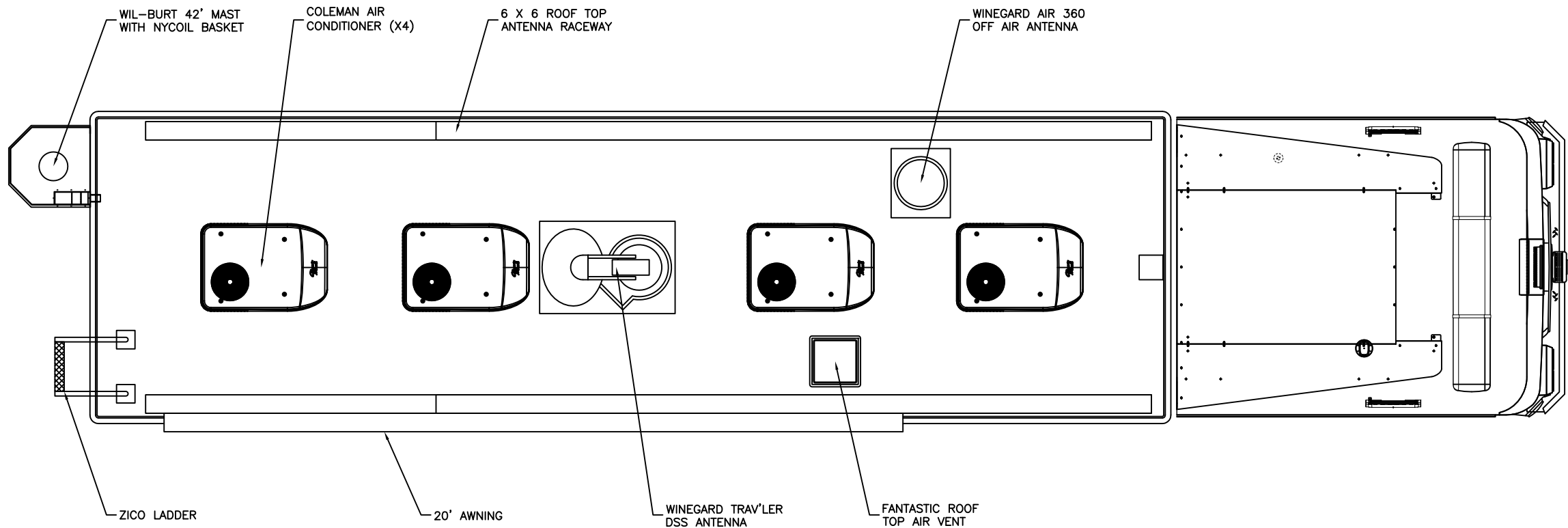
THIS DRAWING IS FOR REPRESENTATION ONLY. DETAILED
ENGINEERING DRAWINGS WILL BE CREATED FOR
MANUFACTURING. CHANGES MAY BE REQUIRED TO
ACCOMMODATE MANUFACTURING REQUIREMENTS AND
CUSTOMER SPECIFICATIONS.

BID # 000

REP: Spartan

DEALER: Andy Callaway - Frontline Communications

THIS DRAWING IS THE PROPERTY OF PIERCE
MANUFACTURING. IT IS CONFIDENTIAL AND ALL RIGHTS ARE
RESERVED. IT SHALL NOT BE REPRODUCED, COPIED, LENT,
OR USED FOR ANY PURPOSE OTHER THAN THAT FOR WHICH
IT IS SPECIFICALLY FURNISHED.



THIS DRAWING IS THE PROPERTY OF PIERCE MANUFACTURING. IT IS CONFIDENTIAL AND ALL RIGHTS ARE RESERVED. IT SHALL NOT BE REPRODUCED, COPIED, LENT, OR USED FOR ANY PURPOSE OTHER THAN THAT FOR WHICH IT IS SPECIFICALLY FURNISHED.

BID # 000

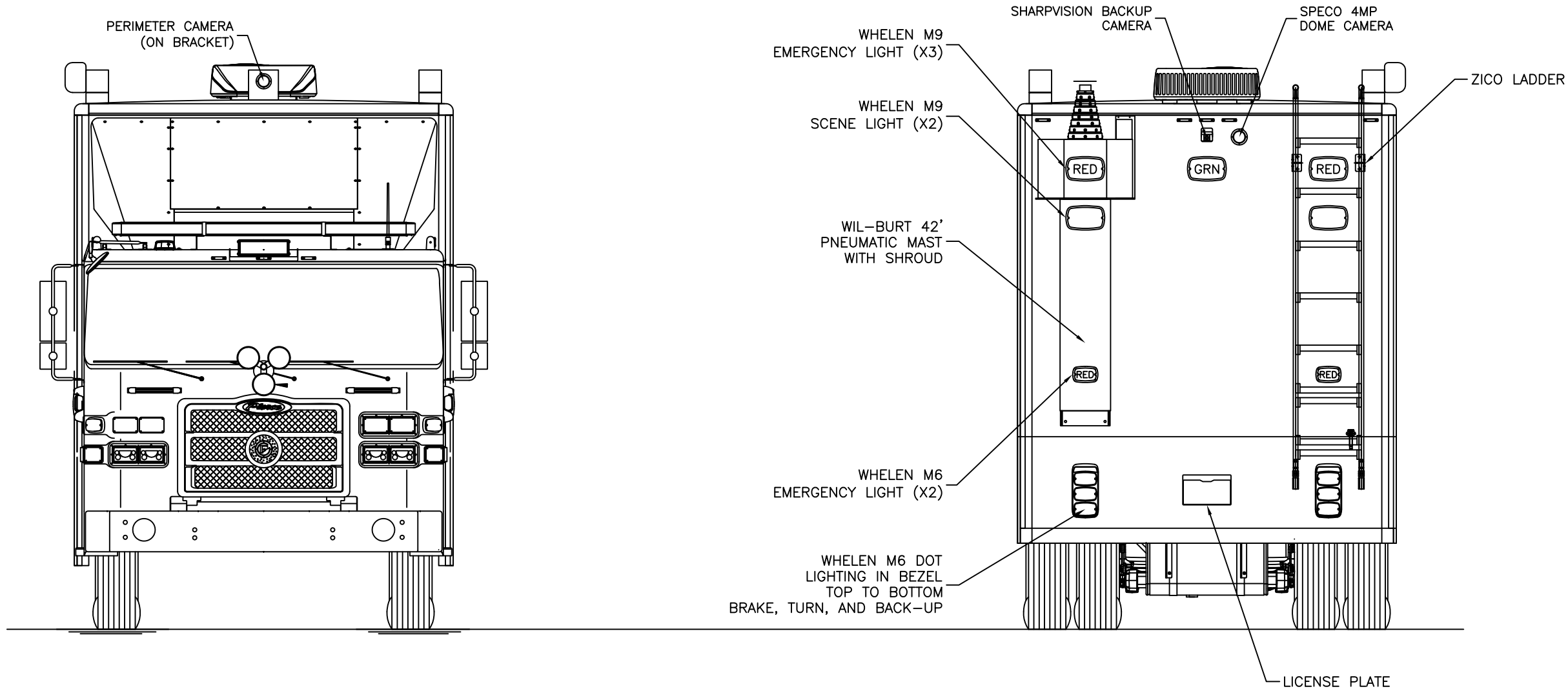
REP: Spartan

DEALER: Andy Callaway - Frontline Communications

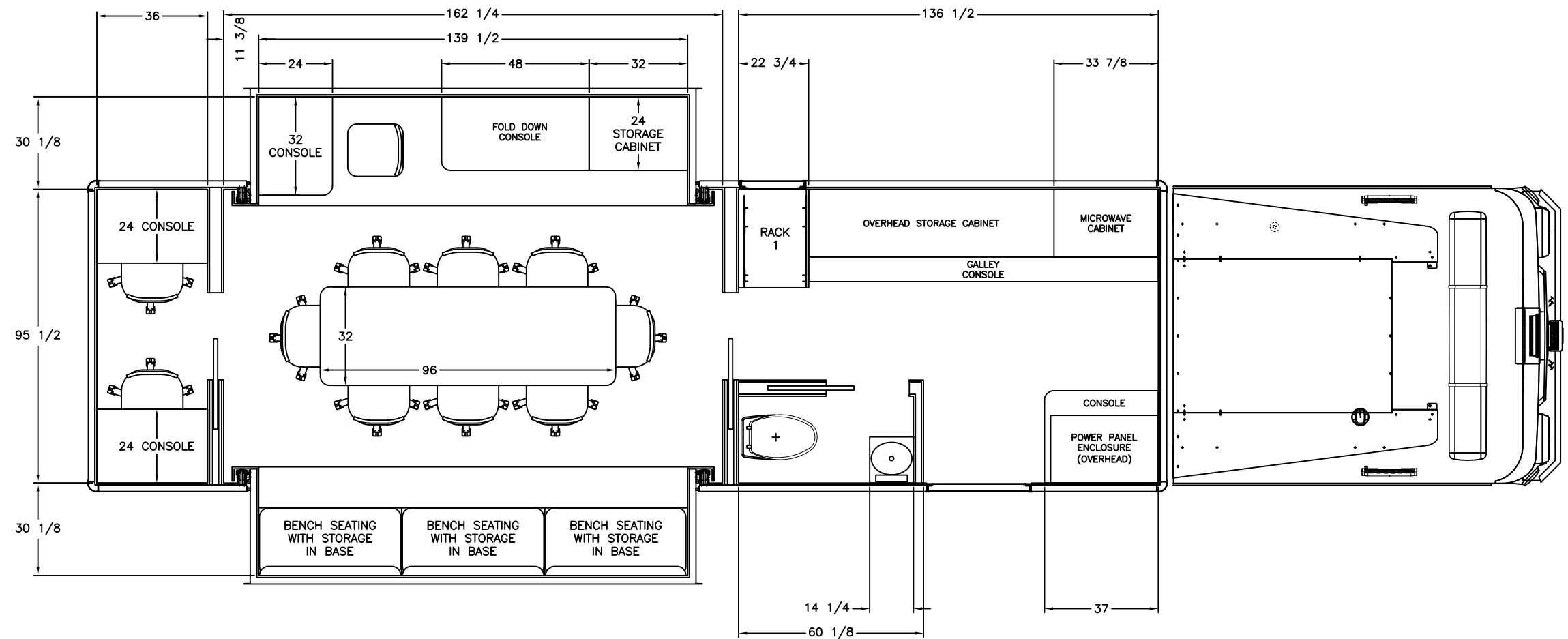
PRELIMINARY USE ONLY

THIS DRAWING IS FOR REPRESENTATION ONLY. DETAILED ENGINEERING DRAWINGS WILL BE CREATED FOR MANUFACTURING. CHANGES MAY BE REQUIRED TO ACCOMMODATE MANUFACTURING REQUIREMENTS AND CUSTOMER SPECIFICATIONS.

<div>FRONTLINE COMMUNICATIONS <small>A Division of Pierce Manufacturing Inc.</small></div>			Lexington County SC Mobile Command Unit C-42 X-2 - Enforcer		
DRAWN	MRS	DATE	6/14/23	SIZE	DWG NO.
SHEET	3 OF 6	NOT TO SCALE		B	P2022-102
					REV
					A



THIS DRAWING IS THE PROPERTY OF PIERCE MANUFACTURING. IT IS CONFIDENTIAL AND ALL RIGHTS ARE RESERVED. IT SHALL NOT BE REPRODUCED, COPIED, LENT, OR USED FOR ANY PURPOSE OTHER THAN THAT FOR WHICH IT IS SPECIFICALLY FURNISHED.	PRELIMINARY USE ONLY		FRONTLINE COMMUNICATIONS A Division of Pierce Manufacturing Inc.	Lexington County SC Mobile Command Unit C-42 X-2 - Enforcer		
	BID # 000					
	REP: Spartan	THIS DRAWING IS FOR REPRESENTATION ONLY. DETAILED ENGINEERING DRAWINGS WILL BE CREATED FOR MANUFACTURING. CHANGES MAY BE REQUIRED TO ACCOMMODATE MANUFACTURING REQUIREMENTS AND CUSTOMER SPECIFICATIONS.	DRAWN MRS	DATE 6/14/23	SIZE B	DWG NO. P2022-102
	DEALER: Andy Callaway - Frontline Communications		SHEET 4 OF 6	NOT TO SCALE		REV A



Lexington County SC
Mobile Command Unit
C-42 X-2 - Enforcer

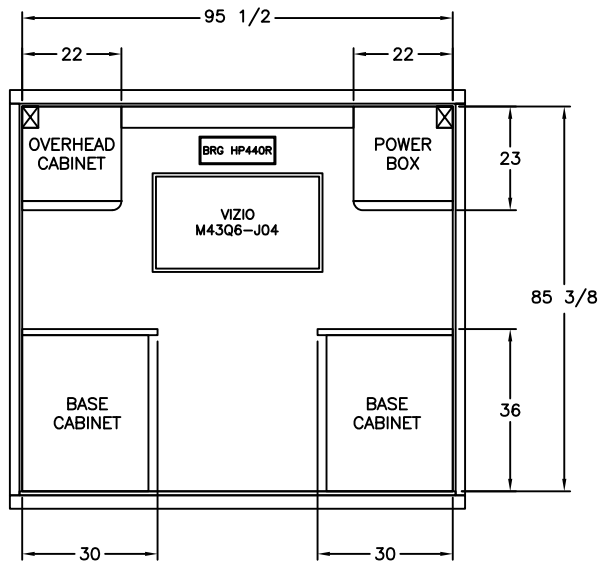
DRAWN	MRS	DATE	6/14/23
SHEET	5 OF 6	NOT TO SCALE	

SIZE	DWG NO.	REV
B	P2022-102	A

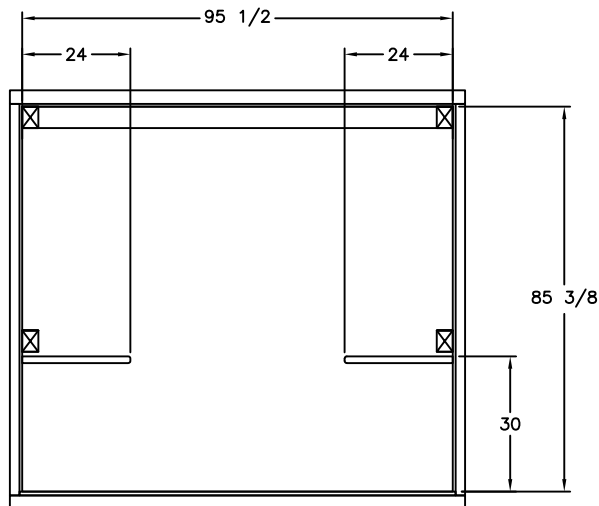
THIS DRAWING IS THE PROPERTY OF PIERCE MANUFACTURING. IT IS CONFIDENTIAL AND ALL RIGHTS ARE RESERVED. IT SHALL NOT BE REPRODUCED, COPIED, LENT, OR USED FOR ANY PURPOSE OTHER THAN THAT FOR WHICH IT IS SPECIFICALLY FURNISHED.

BID # 000
REP: Spartan
DEALER: Andy Callaway - Frontline Communications

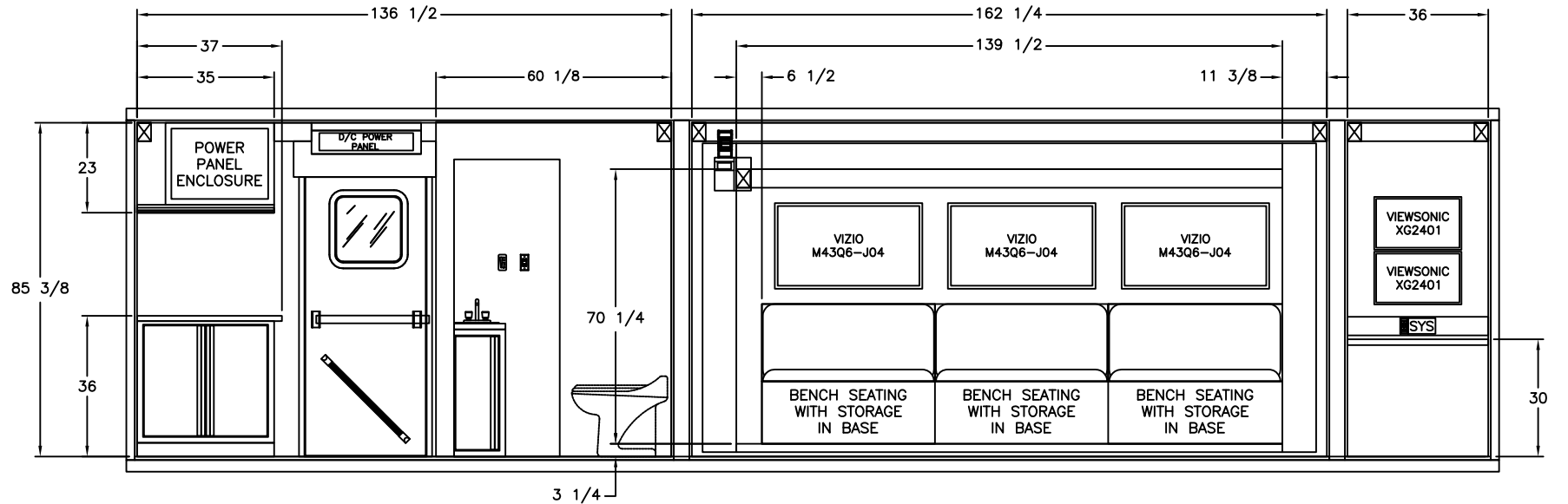
PRELIMINARY USE ONLY
THIS DRAWING IS FOR REPRESENTATION ONLY. DETAILED ENGINEERING DRAWINGS WILL BE CREATED FOR MANUFACTURING. CHANGES MAY BE REQUIRED TO ACCOMMODATE MANUFACTURING REQUIREMENTS AND CUSTOMER SPECIFICATIONS.



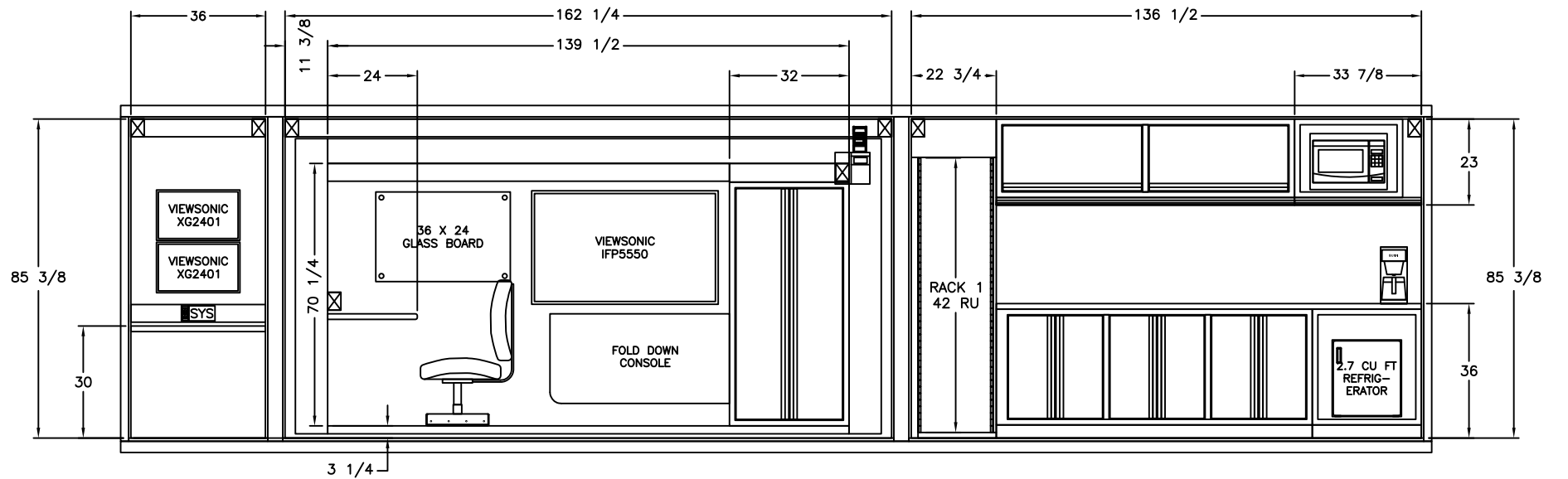
FRONT WALL



REAR WALL



PASSENGER SIDE WALL



DRIVERS SIDE WALL

THIS DRAWING IS THE PROPERTY OF PIERCE MANUFACTURING. IT IS CONFIDENTIAL AND ALL RIGHTS ARE RESERVED. IT SHALL NOT BE REPRODUCED, COPIED, LENT, OR USED FOR ANY PURPOSE OTHER THAN THAT FOR WHICH IT IS SPECIFICALLY FURNISHED.

BID # 000
REP: Spartan
DEALER: Andy Callaway - Frontline Communications

PRELIMINARY USE ONLY
THIS DRAWING IS FOR REPRESENTATION ONLY. DETAILED ENGINEERING DRAWINGS WILL BE CREATED FOR MANUFACTURING. CHANGES MAY BE REQUIRED TO ACCOMMODATE MANUFACTURING REQUIREMENTS AND CUSTOMER SPECIFICATIONS.

FRONTLINE
COMMUNICATIONS
A Division of Pierce Manufacturing Inc.

DRAWN	MRS	DATE	6/14/23
SHEET	6 OF 6	NOT TO SCALE	

Lexington County SC
Mobile Command Unit
C-42 X-2 - Enforcer

SIZE	DWG NO.	REV
B	P2022-102	A